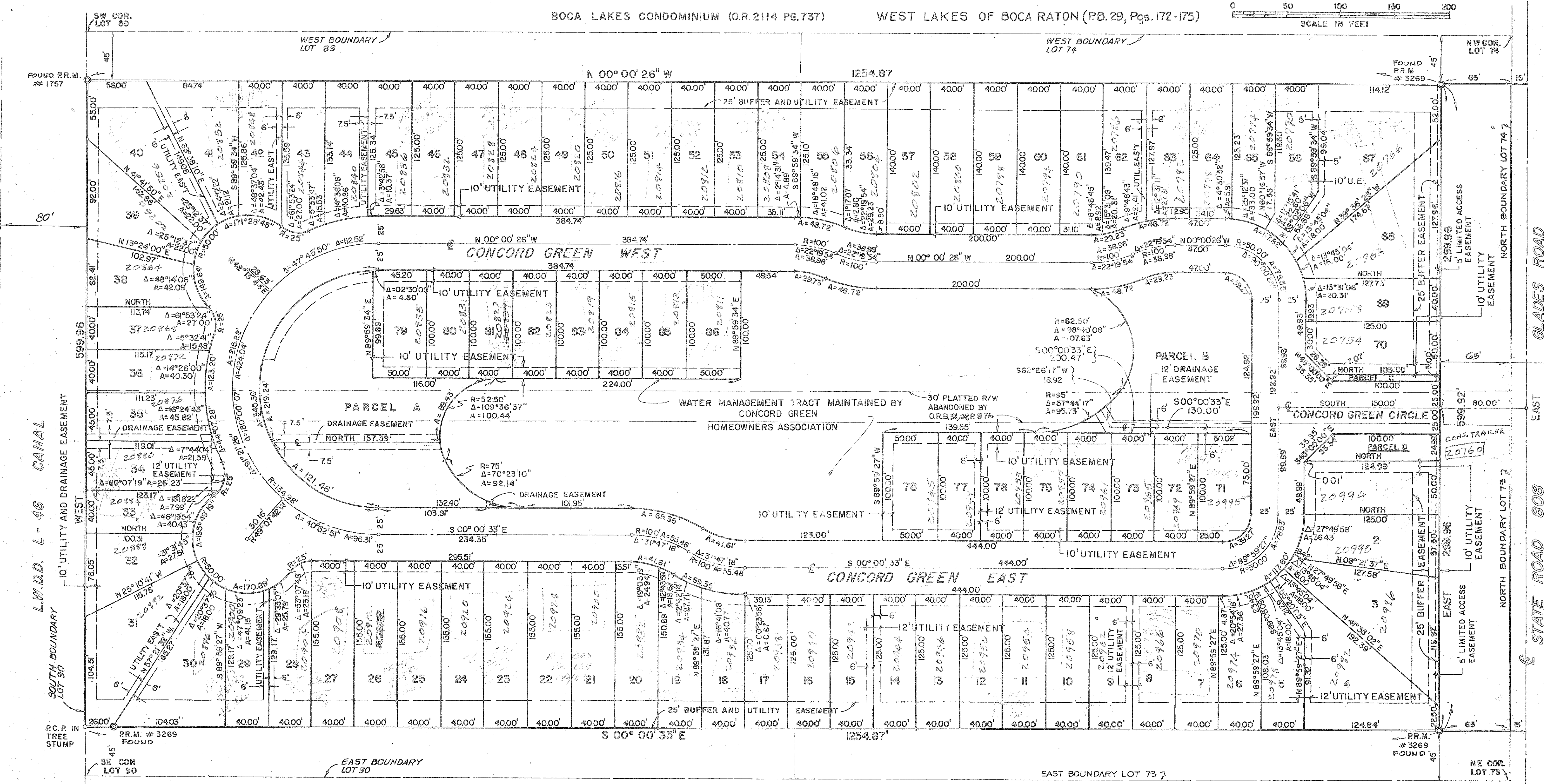
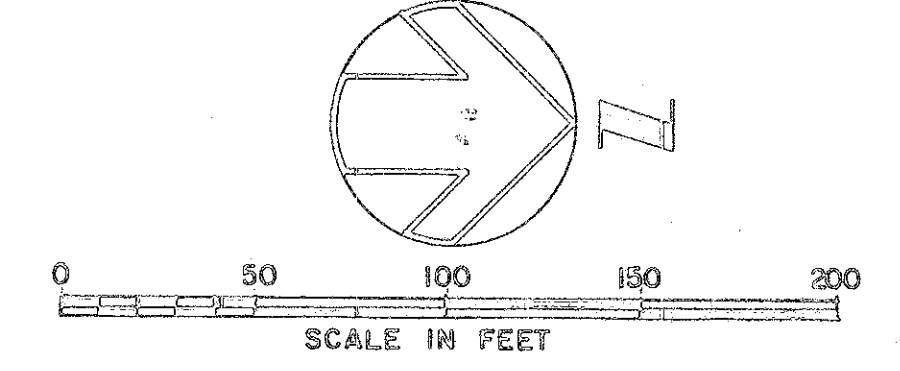


CONCORD GREEN P.U.D.

A RESUBDIVISION OF A PORTION OF BLOCK 76,
 PALM BEACH FARMS COMPANY PLAT NO. 3 (P.B. 2, P. 45-54)
 IN SECTION 17, TOWNSHIP 47 SOUTH, RANGE 42 EAST
 PALM BEACH COUNTY, FLORIDA
 SHEET 2 OF 2

PREPARED BY
 KEITH AND SCHNARS, P.A.
 ENGINEERS PLANNERS SURVEYORS
 115 NORTHEAST 4TH AVENUE
 FORT LAUDERDALE, FLORIDA
 (305) 763-3843

STATE OF FLORIDA
 COUNTY OF PALM BEACH
 THIS PLAT WAS FILED
 FOR RECORD AT
 ON THE _____ DAY OF
 _____ 1981
 AND DULY RECORDED
 IN PLAT BOOK _____
 PAGES _____ AND _____
 JOHN B. DUNKLE
 CLERK OF CIRCUIT
 COURT.
 BY: _____



Additional Road
 Right-of-Way Dedicated
 By this Plat

- SURVEY NOTES**
1. © P.R.M. INDICATES PERMANENT REFERENCE MONUMENT
 2. BEARINGS SHOWN HEREON ARE BASED ON ASSUMED BASIS OF EAST ON THE CENTERLINE OF S.R. 008
 3. NO BUILDINGS OR ANY KIND OF CONSTRUCTION SHALL BE PLACED ON EASEMENTS.
 4. SURVEY DATA IN FIELD BOOK D-55 PAGE 3.
 5. BUILDING SETBACK LINES SHALL BE AS REQUIRED BY ORDINANCES OF PALM BEACH COUNTY, FLORIDA.
 6. ○ INDICATES PERMANENT CONTROL POINT (P.C.P.)

WEST LAKES BOCA RATON (UNRECORDED)
 (MOBILE HOME PARK)

SITE DATA	
NUMBER OF UNITS	86
DENSITY	4.97 DU/Acres
BUILDING COVERAGE	20.4%
STREETS AND PARKING	13.6%
OPEN SPACE	66.0%

45/28
 DWG NO. 10052C-2
 SHEET 2 OF 2

CONCORD GREEN PUD